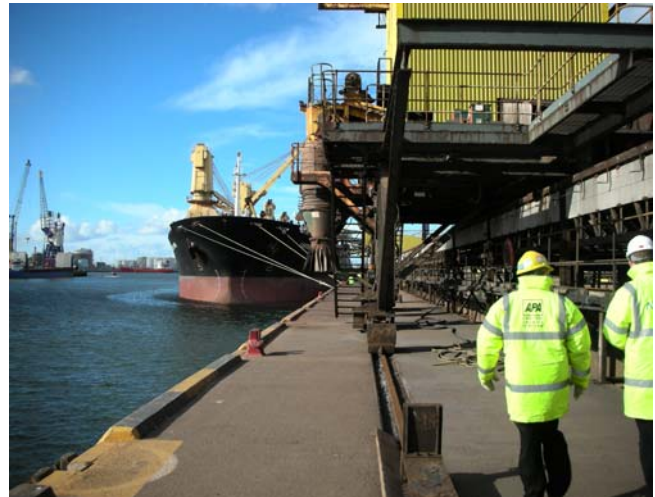
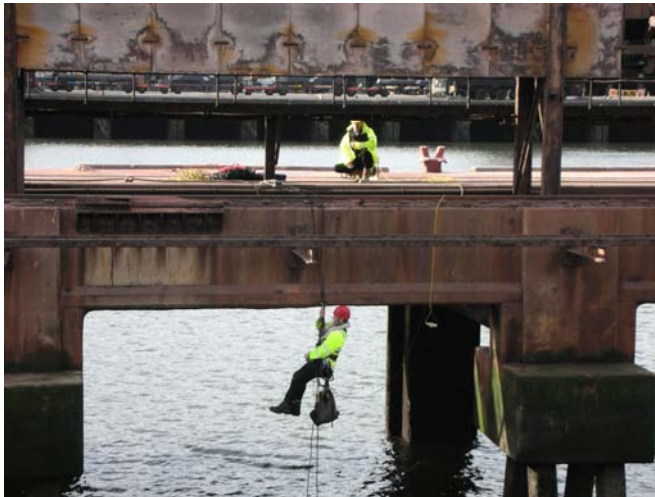


# Project Profile



**Project:** Teesport Jetty Survey

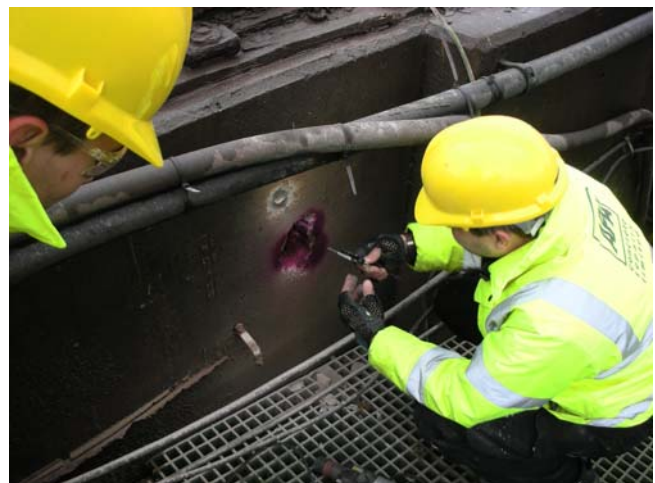
**Client:** Atkins Global



Following a series of interviews and company presentations, **APA Concrete Repairs Ltd** were chosen by the Client from a number of concrete repair specialists to lend their expertise to them and their Consulting Engineers (Atkins Global) to help and advise them with their requirement to structurally assess and refurbish their ship loading and unloading facility at Teesport.

**APA Survey Ltd** was commissioned by Atkins Global to carry out a concrete condition survey to the Tees Dock Terminal and to assess their options for the necessary concrete repair works. Industrial rope access techniques were utilised along with a survey boat for visual appraisal.

The survey works were successfully completed in March 2008 and **APA Concrete Repairs Ltd** went on to provide continued support and advice to enable the optimum repair and refurbishment scheme to go out to tender.



## NORTHERN OFFICE

Black Brook Way  
Greetland  
Halifax  
West Yorkshire  
HX4 8ED  
telephone: 01422 379 640  
facsimile: 01422 374 938

## SOUTHERN OFFICE

Abbey House  
Wellington Way  
Brooklands Business Park  
Weybridge  
London  
KT13 0TT  
telephone: 0208 853 0627

**e-mail:** [info@apaconcreterepairs.co.uk](mailto:info@apaconcreterepairs.co.uk) **web:** [www.apaconcreterepairs.co.uk](http://www.apaconcreterepairs.co.uk)